

CALF Proximal PERONEAL NERVE NEUROGRAM
11-15-16 Monitored

***Call rad in A.M. to have them review case. That way coil selection and pathology can be reviewed**

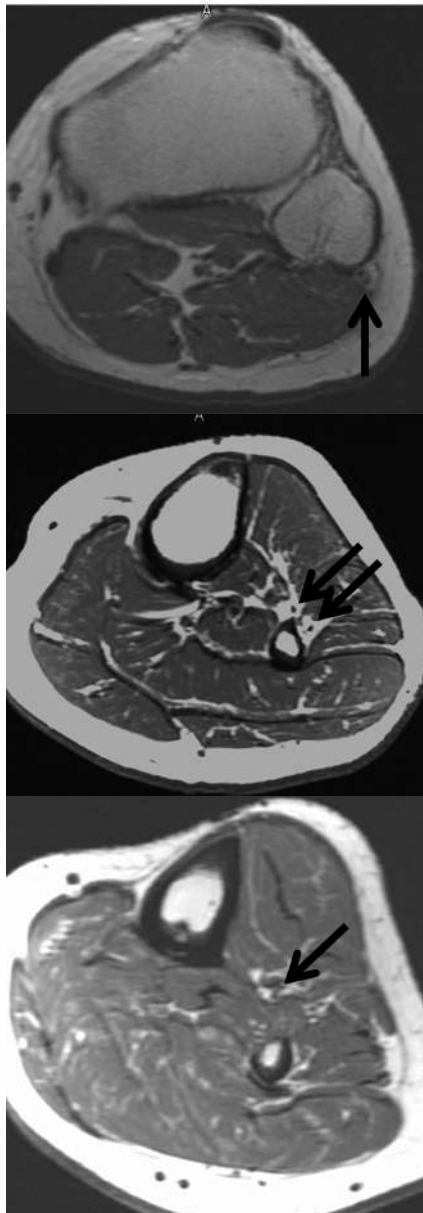
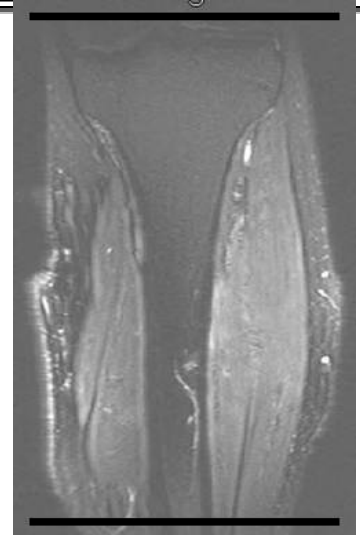
3T ONLY 8 Channel Cardiac Coil

1. 3 PI loc
2. Ax T1
3. Ax T2 dk fat (Separate into upper and lower half)
4. Sag T1
5. Sag T2 IDEAL
6. Coronal T1
7. Cor T2 dk fat

Give .1mmol/kg Multihance

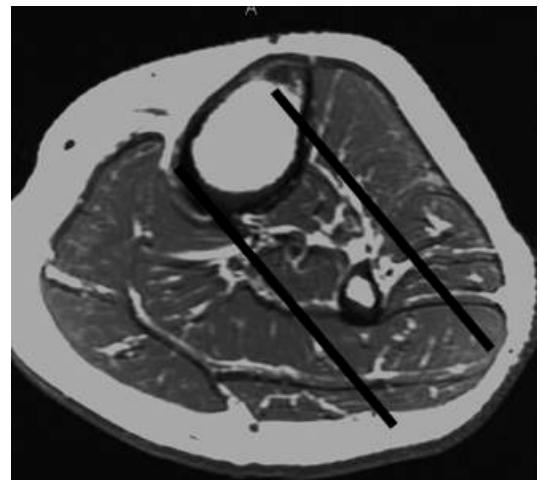
Low eGFR Inpatient Dose: No Change:

3 planes +c T1 dk fat

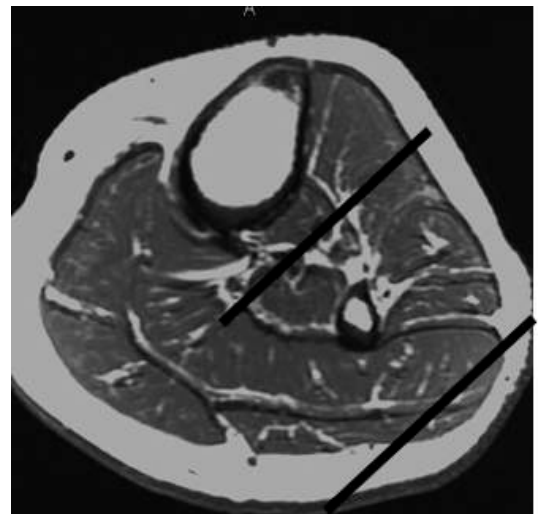


Nerve

Axial Plane



Coronal Plane



Sagittal Plane