

*Call rad in A.M. to have them review case.
That way coil selection and pathology can
be reviewed

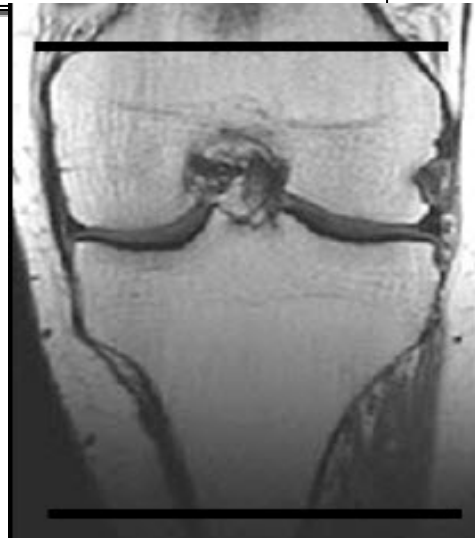
3T ONLY 8 Channel Knee Coil

1. 3 PI loc
2. Ax T1
3. Ax T2 dk fat
4. Sag T1
5. Sag T2 IDEAL
6. Coronal T1
7. Cor T2 dk fat

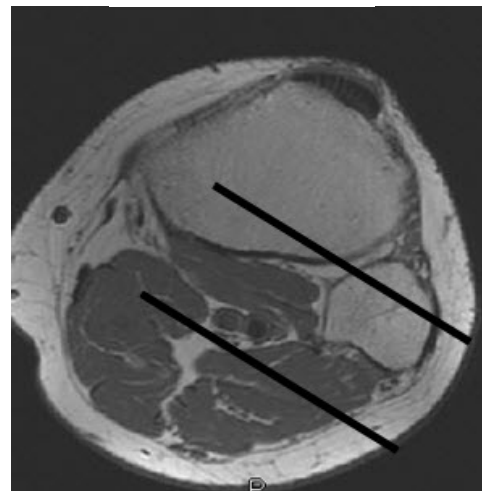
Give .1mmol/kg Multihance

Low eGFR inpatient dose: No Change:

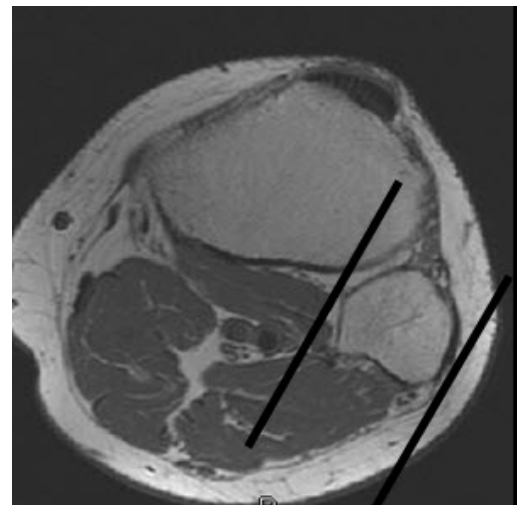
3 planes +c T1 fat



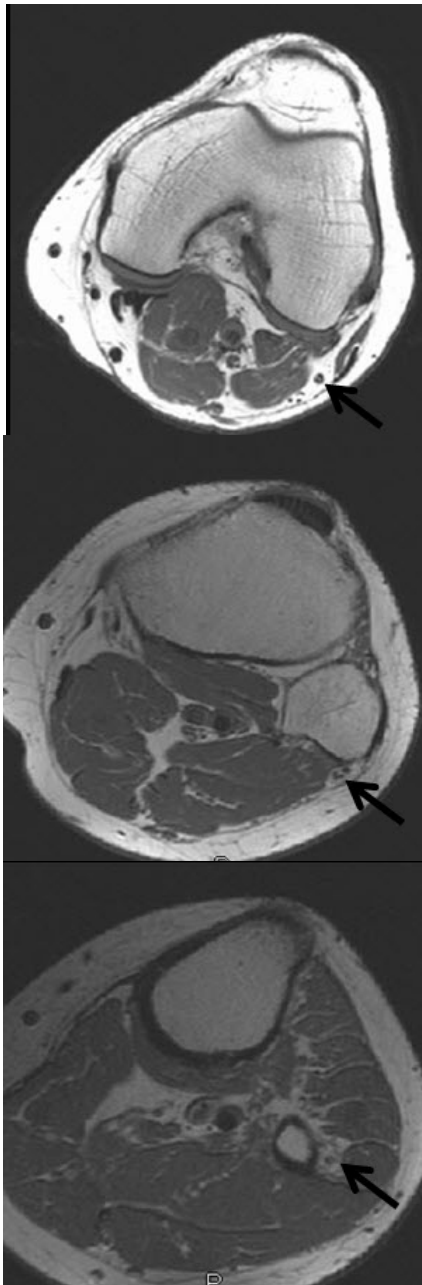
Axial Plane



Coronal Plane



Sagittal Plane



Nerve