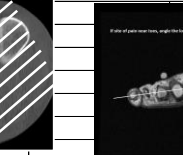
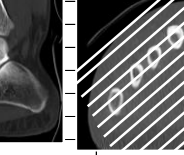
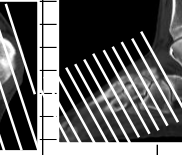
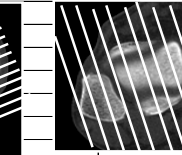
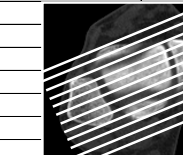
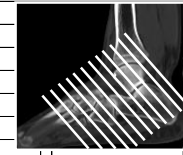
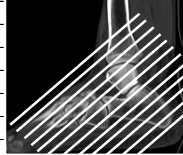
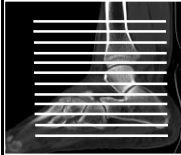


3T FOOT / ANKLE / METATARSALS / TOES MRI - UW MADISON

3/5/13 DeSmet/Robichaud/Trotter

***phase and frequency may be different depending on the protocol used

mev updated 5-11-18



Straight Axial
freq A/P

Oblique Axial
freq A/P -NPw

Straight Coronal
freq S/I

Oblique Coronal
freq S/I - NPw

Mortise Coronal
freq S/I - NPw

Mortise Sagittal
freq S/I - NPw

Short Axis
freq S/I - NPw

Long Axis
freq A/P - NPw

TENDON
1. 3 pl loc
Mortise Sagittal - NPw
3/1.5 fov 16 frq S/I
2. Mortise Sag T1
3. Mortise Sag Fast STIR
Mort Sag T2 85% dk fat
Straight Axial
3/0.5 fov 16 frq A/P
4. Str Ax PD
5. Str Ax T2 cl fat
Obli Cor - NPw
3/0.5 fov 16 frq S/I
6. Obq Cor T2 cl fat
Mortise Cor
3/0.5 fov 16 frq S/I
7. Obq CorPD

OCD
1. 3 pl loc
Mortise Sag - NPw
3/0.5 fov 14 frq S/I
2. Mortise Sag T1
3. Mort Sag T2 85% dk fat
Straight Axial
3/1.5 fov 14 frq A/P
4. Str Ax PD
5. Str Ax T2 cl fat
Mortise Cor - NPw
3/0.5 fov 16 frq S/I
6. Mortise Cor T1
7. Mortise Cor T2 cl fat
8. Mort Cor PD (joint only)

ACHILLES
1. 3 pl loc
Mortise Sagittal-NPw
3/0.2 fov 16 frq S/I
2. Mortise Sag T1
3. Mort Sag T2 85% dk fat
Straight Axial
4/1 fov 14 frq A/P
4. Str Ax PD
5. Str Ax T2 cl fat
Mortise Cor
3/1.5 fov 16 frq S/I
6. Mortise Cor T2 cl fat

STRESS FX -Midfoot
Cover anterior aspect of ankle joint thru bases of metatarsals
1. 3 pl loc
Mortise Sagittal - NPw
4/1 fov 16 frq S/I
2. Mortise Sag T1
3. Mort Sag T2 85% dk fat
Obq Axial - NPw
3/1 fov 14 frq A/P
4. Obq Ax T1
5. Obq Ax T2 cl fat
Obq Coronal - NPw
3/0.5 fov 14 frq S/I
6. Obq Cor T1
7. Obq Cor T2 cl fat

STRESS FX Metatarsals
Cover bases of proximal phalanges to talonavicular jnt
1. 3 pl loc
Sagittal - NPw
4/1 fov 16 frq S/I
2. Straight Sag T1
3. Mortise Sag Fast STIR
Short Axis - NPw
3/1 fov 16 frq A/P
4. Short Axis T1
5 Short Axis T2 cl fat
Long Axis - NPw
3/0.2 fov 16 frq A/P
6. Long Axis T1
7. Long Axis T2 cl fat or LA T2 IDEAL
Opt:Sag T1 thin-NPw
8 Thin Sag T1 3/0.2 fov 16

PLANTAR Fasciitis; Fibroma
1. 3 pl loc
Mortise Sagittal - NPw
3/0.5 fov 20
2. Mortise Sag PD
3. Mort Sag T2 85% dk fat
Straight Coronal
3/0.5 fov 16 frq S/I
4. Str Cor T1
5. Str Cor T2 cl fat
Straight Axial
4/1 fov 16 frq A/P
8. Str Ax T2 cl fat

Forefoot
COVER: Entire phalanges and most of metatarsals
1. 3 pl loc
Sagittal - NPw
4/1 fov 16 frq S/I
2. Straight Sag T1
3. Mortise Sag Fast STIR
Short Axis - NPw
3/1 fov 16 frq A/P
4. Short Axis T1
5 Short Axis T2 cl fat
Long Axis - NPw
3/0.2 fov 16 frq A/P
6. Long Axis T1
7. Long Axis T2 cl fat or LA T2 IDEAL
Opt:SA T1 thin-NPw
Thin Sag T1 2/0.2 fov 16
Thin Sag PD Cl fat 2/.25
12fov
Thin LA PD cl FAT 2/.2
12FOV

Hindfoot
HEEL ULCER or MALLEOLAR ULCER
1. 3 pl loc
Sagittal - NPw
3/1.5 fov 16 frq S/I
2. Mortise Sag T1
3. Mortise Sag FSTIR
Straight Axial
3/1.5 fov 14 frq A/P
4. Str Ax T1
5. Str Ax T2 IDEAL
Straight Coronal
3/1.5 fov 14 frq S/I
6. Str Cor T1
7. Str Cor T2 cl fat
IV Contrast
+C 8. Mortise Sag T1clfat
+C 9. Str Ax T1 cl fat
+C 10.Str Cor T1 cl fat

TOE ULCER or Forefoot
1. 3 pl loc
Sagittal - NPw
3/1.5 fov 16 frq S/I
2. Str Sag T1
3. Str Sag FSTIR
Short Axis - NPw
3/1.5 fov 16 frq S/I
4. Short Axis T1
5. Short Axis T2 IDEAL
Long Axis - NPw
3/1.5 fov 16 frq A/P
6. Long Axis T1 off SA
7. Long Axis T2 IDEAL
IV Contrast
+C 8. Str Sag T1 cl fat
+C 9. Short Axis T1 cl fat
+C 10. Long Axis T1

IDEAL notes
Do not use NP unless you 2nex
TOES
LA view swap frq to A/P 16 x 16 FOV 3 / 1.5 mm
SA view frq default 14 x 14 FOV 3 / 1.5mm
Sagittal swap frq to A/P 16 x 16 FOV 4 / 1

3 pl loc	T1	T2	T2	T2	PD	PD	Incl. Arthrograms	TUMOR ONLY	High Resolution	Screening				3T
3 pl loc		cl fat	dark fatsat	85%dark fatsat	cl fat	No fatsat	T1 cl fat	dark fatsat	dark fatsat	FSTIR	FSTIR	IDEAL T1	IDEAL T2	OCD Hi rez
2d FGRE	2d FSE-XL	2d FrFSE-XL	2d FrFSE-XL	2d FrFSE-XL	2d FrFSE-XL	2d FSE-XL	2d FSE-XL	2d FSE-XL	2d FSE-XL	2d FSE-IR	2d FSE-IR	2d FSE-XL	2d FSE-XL	Mort Cor PD
2d	2d	2d	2d	2d	2d	2d	2d	2d	2d	2d	2d	2d	2d	2d
NP	*NP	*NP	*NP	*NP	*NP	*NP		*NP	*NP	*NP	*NP	*NP		
SEQ	TRf	TRf,	TRf,	TRf,	TRf,	TRf,	*NP	TRf,	TRf,	SEQ,	SEQ,	TRF,	TRF	NPW, EDR, TRF
	fast	fast	fast	fast	fast	fast	TRf,	fast	fast	fast	fast	IDEAL, fast	IDEAL, Fast	Fast, FR
TE def	TE 18	TE 80	TE 85	TE 85	TE 31	TE 24	TE 18	TE 18	TE 18	TE 40	TE 40	TE 16	TE 80	16 x 16
TR def	TR 575 - 900	TR 3600-5000	TR 3600 - 5000	TR 3600 - 5000	TR 2000	TR 1800	TR 700-775	TR 700-775	TR 700-775	TR 3000	TR 3000	TR 550	TR 2200	
	ETL 2	ETL 20	ETL 17	ETL 15	ETL 8	ETL 7	ETL 4	ETL 4	ETL 4	TI 180	TI 200	ETL 4	ETL 20	3/.5
	BW 31	BW 41	BW 41	BW 41	BW 31	BW 31	BW 31	BW 31	BW 31	ETL 8	ETL 8	BW 41	BW 41	TR 3000
										BW 31.25	BW 31.25			TE 42
	Sat scr	Sat scr	Sat scr	Sat scr	Sat scr	Sat scr	Sat scr	Sat scr	Sat scr	Sat scr	Sat scr	Sat scr	Sat scr	ETL 7
	S / I	S/I, cl fat	S/I, FAT	S/I, FAT	S/I, cl fat	S/I	cl fatsat	S/I, FAT	S/I, FAT			NO sats	NO sats	352 x 256
	ADVCD	ADVCD	ADVCD	ADVCD	ADVCD	ADVCD	User CV	ADVCD	ADVCD	ADVCD	ADVCD	ADVCD	ADVCD	3 nex
	Blur 0	Blur 0	Blur 0	Blur cx 1	Blur 0	Blur 0	Blur 0	Blur 0	Blur 0	Blur 0	Blur 0	Blur 0	Blur 0	31 BW
	Clc ann sup 1	Clc ann sup 1	Clc ann sup 1	Clc ann sup 1	Clc ann sup 1	Clc ann sup 1	Clc ann sup 1	Clc ann sup 1	Clc ann sup 1	Clc ann sup 1	Clc ann sup 1	Clc ann sup 1	Clc ann sup 1	
		fat sat eff 1	fat sat eff 1	fat sat eff 1	fat sat eff 1	fat sat eff 1	Blur 0	fat sat eff 1	fat sat eff 1					
32 x 32	FOV 14 - 18	FOV 14 - 18	FOV 14 - 18	FOV 14 - 18	FOV 14 - 18	FOV 14 - 18	FOV 14 - 18	FOV 14 - 18	FOV 14 - 18	FOV 14 - 18	FOV 20	FOV 14 - 20	FOV 14 - 20	ADVCD
10 / 2.5	3 - 4 mm	3 - 4 mm	3 - 4 mm	3 - 4 mm	3 - 4 mm	3 - 4 mm	3 - 4 mm	3 - 4 mm	3 - 4 mm	4 / 0.5 mm	4 / 2 mm	3 - 4 mm	3 - 4 mm	en fine line 1
A 20, 11 sls							22 sls / 2 acq	22 sls / 2 acq	22 sls / 2 acq	24 sls / 2 acq	12 sls / 1 acq	24sls/2acq	27sls/1acq	clc ann sup 1
	320 x 224	320 x 224	320 x 224	320 x 224	320 x 224	320 x 224	320 x 224	320 x 224	320 x 224	320 x 224	320 x 224	320 x 224	320 x 224	Adop 1
1 nex	1 nex	2 nex	2 nex	2 nex	1 nex	1 nex	2 nex	1 nex	2 nex	1 nex	1 nex	1 nex	1 nex	RG 1
	pfov 1	pfov 1	pfov 1	pfov 1	pfov 1	pfov 1	pfov 1	pfov 1	pfov 1	pfov 1	pfov 1	pfov 1	pfov 1	
0:35	2:21 - 2:42	2:48	2:48	2:48	2:36	2:36	2:40	2:40	2:40	3:12	2:12	4:24	4:24	